

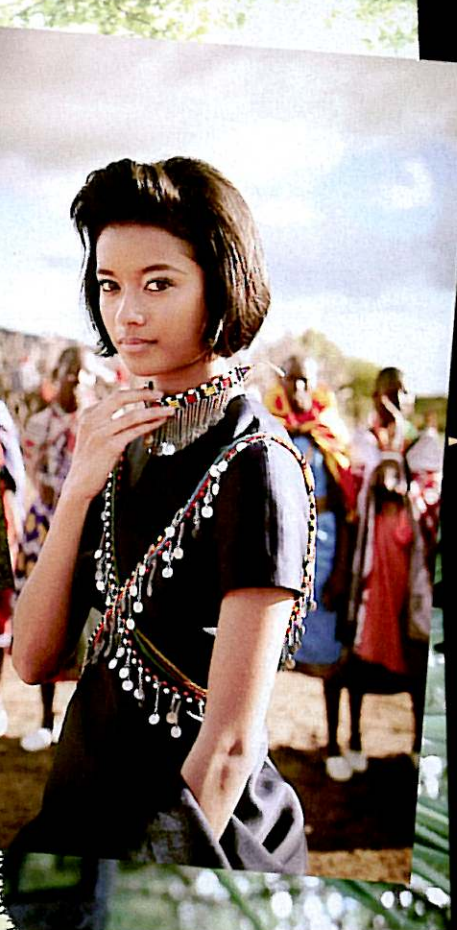
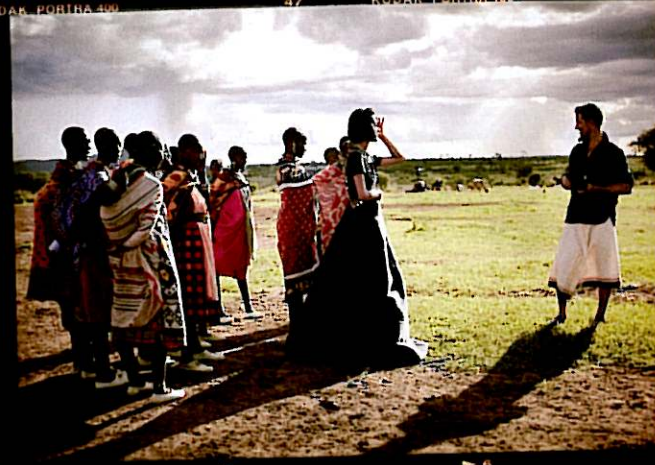
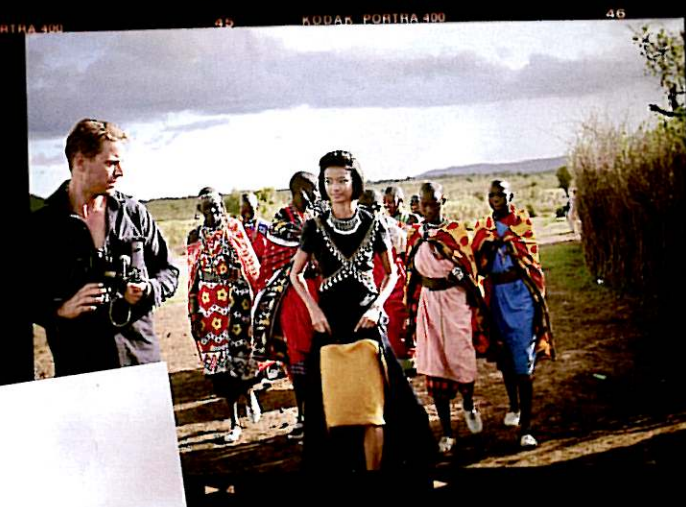
ROCK STEADY
Her eye was on adventure;
his gaze was on her.
Giles silk dress (price
on request); Canfora
sandals (\$290).



BASIC INSTINCTS
 Before the Masai welcomed them, she took a moment to overlook the vista.
 Theyskens' Theory satin dress (price on request); Chanel bracelets (\$4,700 each).
Opposite: On her throughout, Rochas duchesse silk dress (\$2,580); tribal jewelry. On him, Brioni shirt (\$525).



lewin

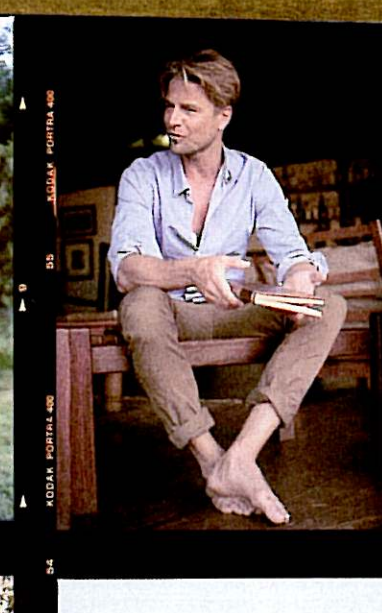
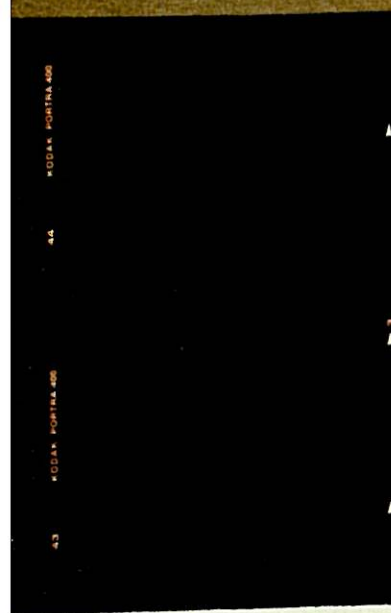
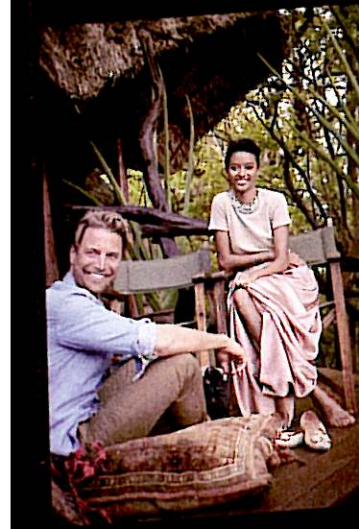
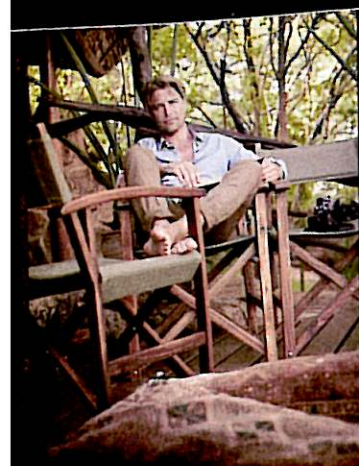


Great Plains of Kenya

CROWNING
ACHIEVEMENT

A simple dress is made bold by a bejeweled headpiece. *This page and opposite:* Bottega Veneta organza and velvet dress (\$24,150); Chanel barrette (\$1,470). Try cool, undone texture: Bumble and Bumble Semisumo pomade.





Elsa's Kopje Safari Camp



NEVER FORGET
Following time well spent at the camp, an elephant from a sanctuary in Nairobi kept her company. Wes Gordon dress (\$2,950); Sseko sandals (\$60). *Opposite, from top:* Oscar de la Renta silk faille dress (\$5,990). J. Crew cotton shirt (\$24.50) worn over Dior silk skirt (\$3,500); stylist's own shoes; Kenneth J. Lane necklace (\$675). Rochas duchesse silk dress (\$9,458); Canfora sandals (\$290). Jil Sander dress (\$4,250). On him, *from top left:* Brunello Cucinelli shirt (\$505); Tommy Hilfiger pants (\$58); J. Crew plaid shirt (\$79).



RITES OF PASSAGE

After posing for her partner, she led a group of Masai warriors across the plains. Jean Paul Gaultier velvet dress with taffeta coat (\$3,555); Canfora sandals (\$290). *Opposite:* Oscar de la Renta silk faille dress (\$5,990). On him, J. Crew plaid shirt (\$79). Add a golden highlight to cheeks: Bobbi Brown 24 Karat Shimmer Brick. For details see page 161.

Hair and makeup by Steffen Zoll using Chanel at Utopia. Photographed on location at Elsa's Kopje safari camp (elsakopje.com) and Cottars 1920s Safari Camp (cottars.com), both in Kenya.

